

**ITEM 26. PARKING - DISABILITY PARKING - VICTORIA STREET
 ERSKINEVILLE**

TRIM RECORD NO: 2014/415457

RECOMMENDATION

It is recommended that the Committee endorse the allocation of disability parking on the northern side of Victoria Street, Erskineville between the points 18.4 metres and 26.2 metres west of George Street as 'Disability Parking Only'.

DECISION

BACKGROUND

A resident of Victoria Street has requested a disability parking space in Victoria Street, Erskineville. The resident has advised they are not in a wheelchair but cannot physically walk far.

COMMENTS

Victoria Street, Erskineville between George Street and Turtle Lane is designated for one-way traffic flow westbound with an approximate width of 12 metres. The road and footway grades are relatively flat adjacent to this proposed space.

The kerb space is currently unrestricted for parking on the northern side of the street.

Under existing conditions, vehicles park on both sides of the street which reduces the trafficable lane for one-way traffic flow to an approximate width of 4.9 metres. The remaining width is allocated for on-street parking.

Footpaths (approximately 3.5 metres wide) are provided on both sides of the street.

The Australian Standard for on-street disability parking (AS 2890.6 – 2009) requires the provision of a 3.2 metre wide by 7.8 metre long bay.

A 7.8 metre long bay is proposed and with consideration for the width of existing parking lane in Victoria Street, a 3.2 metre wide bay can be accommodated within the carriageway.

Although the resident is not wheelchair-bound and kerb ramps are not necessary, the City will investigate installing ramps at this site should the proposal be endorsed.

CONSULTATION

The City consulted local residents and businesses in the area. There were 75 letters sent out with one response supporting the proposal and three responses opposing the proposal.

The submissions opposing the proposal were concerned about the loss of unrestricted parking.

FINANCIAL

Funds are available in the current budget.

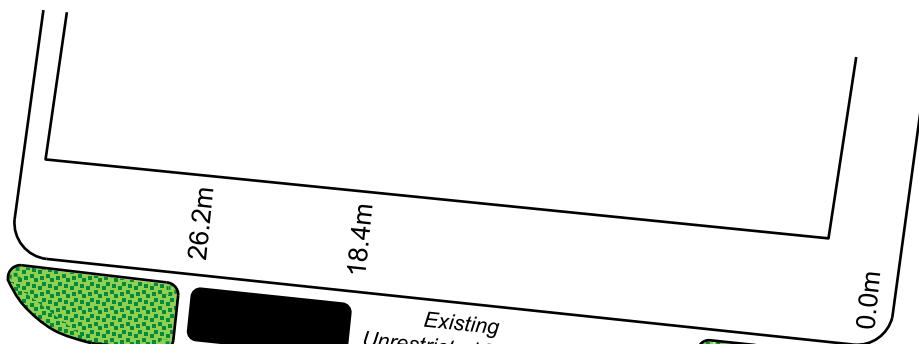
ATTACHMENTS

Parking - Disability Parking - Victoria Street Erskineville

Engineering Traffic Officer, Michael Rimac

Turtle Lane

George Street



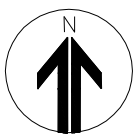
Existing
No Stopping

Existing
Unrestricted Parking

Victoria Street

**Proposed
Disability Parking
(1 car space)**

*Existing
Unrestricted Parking*



PROPOSAL

VICTORIA STREET, ERSKINEVILLE
PROPOSED DISABILITY PARKING



